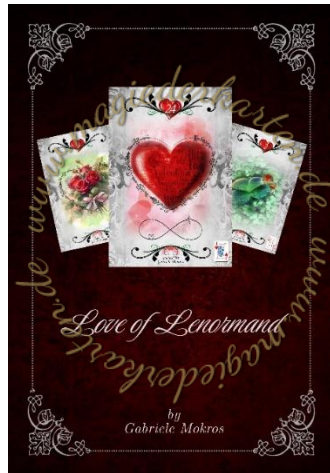


# „Love of Lenormand“



## Introduction

During Napoleon's time, the French fortune teller Mademoiselle Marie Anne Lenormand ( 1772-1843 ) used a card system as a tool to make predictions about the future; the “Lenormand cards”. They were probably based on older tarot cards that Marie Anne Lenormand worked with. The card system she used contained 54 cards at the time, and since it was distributed as “Petit Lenormand” in 1850, only 36 cards that could show the entire spectrum of a questioner's future. From love matters, to the financial situation, professional aspects to the prospects of success that a project had in store. Therefore, not only did the French Empress Joséphine consult Mademoiselle Lenormand, but Napoleon himself and the Russian Emperor Alexander I also sought advice from her.

Several charges of treason, espionage and witchcraft were brought against Marie Anne Lenormand. However, the investigations were usually stopped and prison sentences were immediately revoked. Not least because of her prominent customers who stood up for her.

This summary of the “Love of Lenormand” card deck does not claim to be complete, as each card can have up to 80 meanings, depending on its location in the card picture or depending on the surrounding cards, and these could then fill an entire book. Here is just a summary that provides a first insight into the Lenormand cards and their meanings

Copyright & Author: Gabriele Mokros

Use only for private use, physical and virtual reproduction is expressly prohibited, use in public spaces only with written permission, which we will be happy to grant free of charge upon request.

## 1- Rider



The rider in Lenormand is usually represented by a man on his horse. This card means incoming news or the arrival of a person. It is only clear from the cards that lie around the rider in the deck of cards whether it will be something positive or negative; when placed alone, the card is rather imprecise. When asked about time or period, the tab means "very quickly." In order to explicitly show the love that the "Love of Lenormand" is all about, the rider in this Lenormand deck comes in the company of his loved one.

## 2-Clover



The card of the clover is symbolized by a four-leaf clover. The clover announces a lucky event or period and is basically a positive card, and as a lucky charm one of the lucky cards in Lenormand. It equally stands for stability and fulfillment in romantic relationships. Even a lottery win is possible with this card ! As a time meaning, the clover stands for a period of one to four weeks.

## 3-Ship



The ship in Lenormand is primarily symbolic of travel in the near future. This may indicate a trip or vacation, but also to make a journey to yourself, for example, to realize yourself, whether in the context of a hobby or even to develop his talents. This trip can also be professional, to start new projects abroad, to establish connections with distant partners. It indicates great possibilities of success. The ship also means longing, looking at the sea and waiting longingly for something, for example, a ship that will bring us our loved one.

It could also indicate a visit or partner coming from far away. As a time tendency, the ship is generally equated with 3-6 months. Travel by ship always takes longer than by other ways of transportation.

## 4-House



The card of the house is associated with everything related to the home and family. The house also heralds a certain permanence, whether positive or negative.... This card can also be representative of an inheritance. Other meanings lie in the reliability, stability and in a solid foundation, because only on a solid foundation can be built well! If it is about a time trend, the house stands for a certain long-term, many years.

## 5-Tree



The tree is a card that stands primarily for health and well-being. But also for serenity, inner peace and reflection. With its roots it stands firm and stable even in the strongest storm, this stability is expressed by this card. The tree also stands for growth, namely a longer and slower growth, similar to a pregnancy, therefore it also stands for about 9-12 months in time questions. If the personality of a person is asked, the character here is sovereign and down-to-earth, the person would be described as a relaxed personality.

## 6-Clouds



The clouds warn that there are obstacles to overcome and trials ahead. These obstacles or blocks to a situation can slow down the desired development that was asked for. There can also be tensions in the relationship. The sky darkens when one faces problems. The clouds symbolize autumn as an indication of time.

## 7-Snake



The snake doesn't bring good news, because it symbolizes betrayal, jealousy, but also infidelity in the partnership. Here you have to be careful, because you could have to deal with a "false snake". The snake symbolizes in questions mostly a lady, only rarely times a man. It could also represent a girlfriend, if she is jealous or speaks badly about a person behind her back. This card simply means "Stop, be careful" And you should take this to heart, you should question your trust in other people, especially in your partner. The card Snake indicates delays and detours, but is actually less to be interpreted as an answer to a question of time, it stands more as a person card.

## 8-Coffin



As a bearer of bad news, the coffin reveals its meaning as a negative card. The card announces the end, as well as a new beginning, according to the statement "When a door closes, a window opens !"  
It can be a relationship, a job, a business.... In short, the card of the coffin represents a period of life marked by changes, but it is accompanied by difficulties, sadness and grief.  
As a time card, the card of the coffin announces no less than eternity. For example, if you ask about the duration of a marriage, you can be happy about a very very long connection, something that is made for eternity.

## 9- Bouquet



The bouquet represents an invitation to a meeting, this can be a rendezvous or even a party or family celebration. The card of bouquet has a very positive symbolism, the bouquet also announces an unexpected gift. The bouquet is a harbinger of joy and happiness, friendly exchanges as well as success in love.

In addition, the bouquet symbolizes spring as an aspect of time.

## 10- Scythe



On the one hand, the scythe stands for a rapid and drastic event, but on the other hand it also announces a time of harvest, you can now reap the fruits of your labor, the harvest time has begun. However, this card is also about injuries that take place. Therefore, it can also herald a difficult time where sacrifices must be made so that the future can be better.

This radicalness and sharpness that the card of the scythe expresses, indicates a very fast arrival of the future statement, so it means that some predictions will come true immediately.



## 11-Whip



Now it's all about the whip ! This card announces conflicts, disagreements or discussions. You are facing an unpleasant and aggressive situation. Disputes can be present at different levels (family, friends, work). The card of the whip urges restraint so that a situation does not escalate. The whip represent the number 2: 2 days, 2 weeks or 2 months.

## 12-Birds



Birds like to chatter or twitter, they also intensively observe their surroundings. In Lenormand they announce, among other things, blasphemies or debates. But because one is also under observation, it can also come to a message from another person. One receives a positive message or also signs of affection, be it in the family or friend circle or also from a potential partner. In the original Lenormand the card 12 stood for owls, they also stood for wisdom, good observation and a deep knowledge.

As a time card, it is about things that will happen in two months, as a person card, the birds likewise stand for two, a couple or two other people.

## 13-Child



Card 13, "The Child" can represent a child, but also a beginning, new start or even a new project. The surrounding cards indicate the result of this beginning. This card has different interpretations. Either to symbolize a child or it is a state of mind or a situation that turns out to be spontaneous and full of childlike ease, and you do not have to worry about the development in the future. In this development there is an air of youth and joy of life that will carry the whole path that one has chosen. As a time card, this card indicates the short time.

## 14-Fox



It is common knowledge that the fox is cunning, but also cautious or false. This card comes with the good indication that deceptions, lies or manipulations of all kinds are coming our way. If the fox comes to lie, one must be cautious and on guard. For now, it is not advisable to connect with people or talk too much about projects in the personal environment (friends, family, acquaintances, work colleagues), because the danger can come from anywhere and strike in all areas of the private environment to the professional world. However, the fox also indicates that one does not want to see the truth. As a time card, the fox indicates that it is currently the wrong time.



## 15- Bear



The bear, there he stands now in his full strength and power. It is here besides the strength in relationships also about financial. The strength can express itself on different levels of existence. Through physical strength, which gives energy to achieve goals that one has set in life. But also mental strength that drives us to rise above ourselves to pass tests and achieve our ambitions. It can also be the emotional strength to believe in our dreams, not to let us down when hard blows hit us. In short, the bear represents achievement and happiness, the ability to succeed in our lives. The time level is similar to the house, a long time from 10 to 20 years.

## 16-Star



The star represent luck, it is one of the highest cards of luck in Lenormand, predicting a good outcome and a very positive course . Ideas and dreams can be realized. This card is a symbol of serenity. It announces a time of peace, a pleasant tranquility will appear in life. It gives the opportunity to enjoy times of happiness. Time symbolism : night.

## 17- Stork



The card of stork belongs to the positive cards. It can herald great positive changes for the future. All areas of life can be affected (personal, professional, romantic, financial). The stork can announce a move, also a trip, the birth of a child or a new activity. With the help of enclosed cards you can see the area that is affected by the change. The timing that applies to the card "The storks" would be 3-4 weeks , but also the early spring, February until May.

## 18- Dog



The dog in Lenormand stands for friendship. It heralds loyalty and happiness in relationships. In the personal sphere, you have the opportunity to spend more time with friends and family and to have wonderful moments with them. In the business and professional sphere, it would be possible to meet people who can help you progress and with whom you can have open discussions. As the dog also stands for patience, it is not associated with a short period of time, but with the long term.

## 19- Tower



.The Tower of Lenormand symbolizes a retreat into oneself. But also career and authority. The high tower is a symbol of security, it represents a bulwark of protection against all outside influences, therefore it can also represent a hospital or other safe retreat. It is also the card that represents success, as most projects that are carried out will be successful in the near or distant future. The tower represents the time card for the next 12 months

## 20- Park



The park is for the public. In the days of Mademoiselle Lenormand, the park was the place where you could see and be seen. The park also heralds gatherings or events in public places. This card symbolizes good humour, joy and sociability. In this phase of life, things will change with serenity into more pleasant and warmer situations than those experienced in the past. The environment will harmonize towards favorable opportunities so that one can move into the best possible development, while still enjoying a moment of peace and serenity in nature. In terms of time, the card of the park suggests that things will take a little longer to come together. One can assume 2-4 months.

## 21- Mountains



The card of the mountains heralds many problems. We must be prepared to face obstacles and blockages. This card symbolizes an obstacle on our path. It warns us that the steps we are about to take will be difficult and will require a great deal of commitment in order to carry them out. It will require patience and courage, as this situation can block many of the current projects.

The card says that time is blocked.

## 22- Crossroad



The card of the crossroad urges us to make a choice, there are several paths, several solutions. The time has come, indeed, we are being asked to make a decision for the future. It can be very complicated and will involve many thoughts, doubts and uncertainties. If the crossroad card falls, progress will be slowed down, so you will certainly have to postpone projects and take care of challenging matters. However, these matters must be resolved in order to be able to move forward in life with more serenity in the future.

A period of 6 weeks is on the horizon.

## 23- Mice



Whatever you do, the mice stop you to make it clear that it is a waste of time! This card announces a loss, be it of energy or money, and leads to stress. The mice warn us to be careful who we trust. They are often synonymous with theft, manipulation, blackmail... People will try to approach us dishonestly or feign sympathy for us in order to lure us into a trap. Dishonest contemporaries will try to abuse our trust in order to satisfy their personal desires. These people can blend in very well in a private or professional environment and are sometimes unrecognizable at first glance. However, the mice are also concerned with fear of loss. Time statement: loss of time, time delay.

## 24- Heart



The heart is a promising card, it is the trump card of love. Feelings of love are in the air, there is a very positive and cheerful vibration. The heart heralds a time of joy, high spirits and fulfillment in all areas, especially in love. We can now enjoy a harmonious atmosphere, we will radiate serenity and love, among friends, within the family, as well as in the work environment. The heart is not only associated with the spring season, but can also point to 7 years or even just the month of August! As you can see, the heart wants what it wants, regardless of time and space.



## 25- Ring



The card "The Ring" stands for connections and union. The ring can herald a marriage, a life together. It seals contracts and agreements; in earlier times, contracts were sealed with a wax seal and the sign of a signet ring, hence the reference of the ring to business contracts. At work, it can bring new contracts, a promotion, the transition from a fixed-term contract to a permanent contract. Above all, however, it represents a very strong bond. Depending on the question, the ring announces a repetition or a cycle of 5 to 7 years.

## 26- Book



The Lenormand book primarily indicates that there are secrets. There is something that hovers in the shadows. Secrecy and closedness are symbolized by the Book card. The book also has a strong connection to the concept of wisdom in life, to learning and studying, and to knowledge and education in general. Education enables you to solve many problems, resolve blocked situations and open doors to start new projects. And the book tells you that your future is not predetermined. You write your own story! In terms of time, the book tells us that we still have to wait a while, something is still a long way off and not yet ready to happen.



## 27- Letter

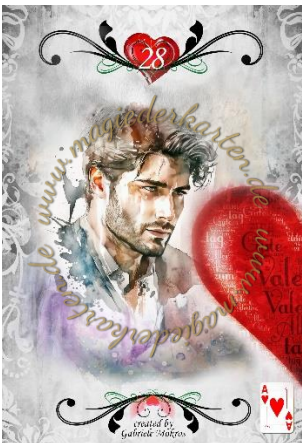


The letter contains news for us. We can expect news in the form of emails or by other electronic means or even by post. The card indicates a need to communicate. If you have been hesitant to get in touch with someone, now is the time to get started!

Unfortunately, this card can also be used to send official messages or bills. Therefore, pay attention to the cards around the letter, as they give an indication of the area for which the letter is intended. The letter can also indicate superficiality.

The Lenormand letter dates a time statement to a fast time, it is already "on its way". ( 7 days )

## 28- Gentleman



The card "The Gentleman" shows the man in your life. The husband, the boyfriend, the lover or simply the jack of hearts who is in your heart. If the questioner is a man, this is the person card of the questioner. The card heralds a time of general happiness.

You can enjoy a wonderful time with the people you love, a time in which you can strengthen love and friendship. The time statement for the Gentleman is April.

## 29- Lady



The card Lady primarily shows us the woman. The female querent lies with the Lady card in the hand, in the case of a male querent the card shows us the lady of the heart, the lover or the wife. It also indicates stability in terms of emotions and feelings, as well as a period of time that is conducive to social contacts in order to build personal or professional relationships. It can also harmonize situations that were once complicated, bringing them back into balance. The time statement for the lady is May.

## 30- Lily

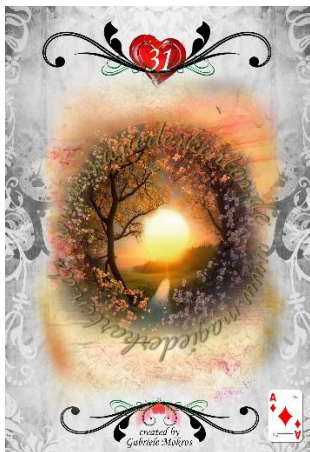


Lilies are associated with eroticism and harmony! They proclaim loyalty and something lasting. Other meanings would be loyalty, honesty, purity, elegance. This card announces a time of serenity in which you can enjoy the sweetness of life. Lilies also indicate a great and favorable potential for luck.

Lilies come from the winter season and therefore indicate winter as a time statement.

Stagnation is also indicated with the lilies, something is "on ice", just like many things in the winter season.

## 31- Sun



The Sun - another of the big lucky cards in Lenormand. It stands for a good outcome to a situation, for unexpected success, both privately and professionally. Everything goes according to plan and efforts are rewarded. The Sun stands for profit, happiness and harmony in love, as well as monetary gain. A happy and cheerful phase, because the sad times end with the sun! This card is bright, it brings energy, happiness and joy into life. As an indication of time, the sun is of course summer.

## 32- Moon



The Moon is about feelings, sensitivity, soul and dreams. The Moon card heralds a time when all abilities will be strengthened, whether they are mental abilities such as intuition and imagination, or abilities in the professional field.

The Moon card announces that visualization will improve and meditation will become easier. But the moon can also herald a time of melancholy. Self-deception, moodiness and illusions are the other side of this symbol.

As a time card, the moon indicates 4 weeks, 28 days, like the lunar cycle.

## 33- Key



The card The key represents the symbol of a key, a tool for opening or closing, linking or separating. It is the solution to some problems. It provides valuable help and tells you that things are about to get rolling. This card indicates that the solution is imminent, you are entering a new phase of opening up new possibilities. You can close one chapter in order to start another. This card stands for the need for security, in some cases it is also the symbol of prosperity, an important period in our destiny, an important moment, a form of liberation. The Key gives the advice to open up to something new or to start something new.

As a time card, the key points to November

## 34- Fish



The fish is the card of finance, indicating financial success. Nearby cards indicate whether a business or professional venture is going well. It is a positive card that represents fun, pleasure and the ability to enjoy the present moment. In general, Fishes is the picture of independence and freedom. In love, the Fishes card represents the soul mate, as Fishes also stands for great feelings. However, Fishes also indicates danger through addictive behavior! Fishes heralds a period of 3 to 5 years.

## 35- Anchor



The anchor of the Lenormand stands for the profession. It provides security and longevity. The situation shown by the card is stable and well anchored. The card also stands for commitment. The anchor also indicates clinginess, you hold on too tightly, like an anchor holds on to a ship, you have to learn to let go. The anchor stands for "permanent and stable"!

## 36- Cross



The cross in Lenormand is a very complex card due to its diverse symbolism. It is the card of destiny. Although it stands for sorrow and worry, from which it is almost impossible to escape, it is also a symbol of faith and hope. When this card lies, it is also a sign of waiting. The course of time, fate and karma cannot be changed. Other keywords associated with the cross are burden, trial, religion, responsibility, sacrifice.

The cross indicates 2-3 weeks as an indication of time.

